

DAVID CITADEL

JERUSALEM



EVENTS

AlrovLuxuryHotels

DAVID CITADEL

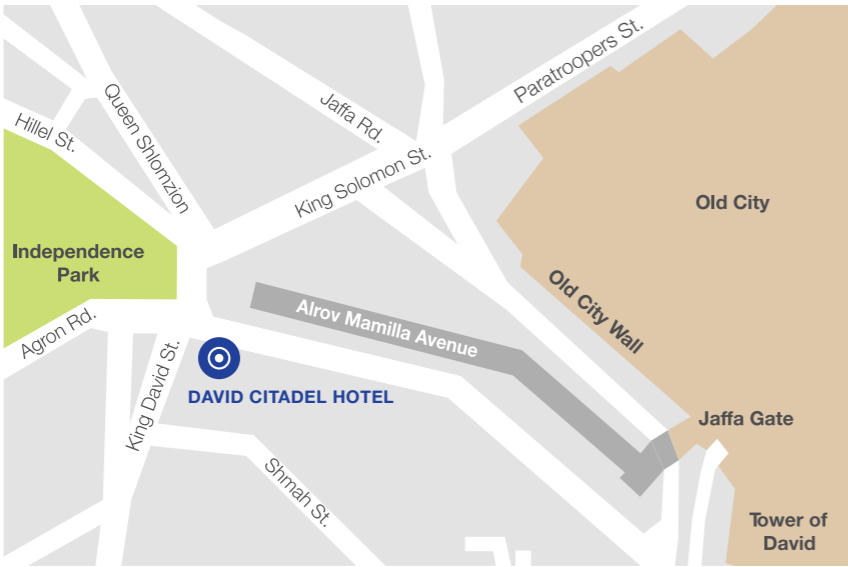
JERUSALEM

THE ADDRESS IN JERUSALEM

With an exceptional location, uniting ancient Jerusalem and new, the David Citadel gives you unequalled access to the holy city's unique treasures. The timeless alleyways of the Old City, the Western Wall and holy places are all within easy walking distance from this landmark hotel.

It starts with an unforgettable panorama. Whether from your private balcony, or while dining at the famed garden terrace, our views of the Old City walls are the finest in Jerusalem. When you wish to explore further, leave the taxis and tour buses behind - the sacred sites are a short stroll from your door.

Afterwards, relax in freshly renovated rooms and suites that are the most spacious in the city. Indulgent touches abound, from Bulgari amenities to Frette linens. From our renowned spa and pool, to culinary experiences your family will long remember, it may be that your favorite day in Jerusalem, is the one you linger longest, savoring the luxuries at this address.



CONTACT DETAILS

DAVID CITADEL HOTEL

7 King David St. Jerusalem
thedavidcitadel.com
Tel: +972 (0) 2 6211111

EVENTS

Tel: +972 (0) 2 6212590
Fax: +972 (0) 2 6212323
Banquet@TDCHotel.com





INSCRIBE YOUR CHAPTER IN THE STORY OF JERUSALEM

From weddings and bar mitzvahs to corporate meetings and conferences, the David Citadel Hotel is renowned for creating and hosting the most elegant and successful private events and business occasions in Jerusalem.

Offering the highest standards in hospitality and service, the hotel's banqueting team combines detail and inspiration to ensure that each function is perfectly planned and executed. Flexible arrangement of the hotel's banquet halls and reception rooms can accommodate clients' individual needs, while internationally acclaimed chefs help create the right menu to create an unforgettable culinary experience.

With its breathtaking views of the Old City walls, the hotel offers a range of venues that serve as a magical backdrop for all occasions.

DAVID CITADEL



CREATIVE CUISINE

Anchored by a team of local professionals, the David Citadel Hotel's catering staff offers the best in cuisine for each event. Relying heavily on fresh ingredients from Jerusalem and its surroundings, the staff invests great efforts in delivering a creative range of seasonal dishes that please the most discerning palate. Add to that impeccable service and perfect presentation, and the staff is able to create a superb and memorable dining experience for all.

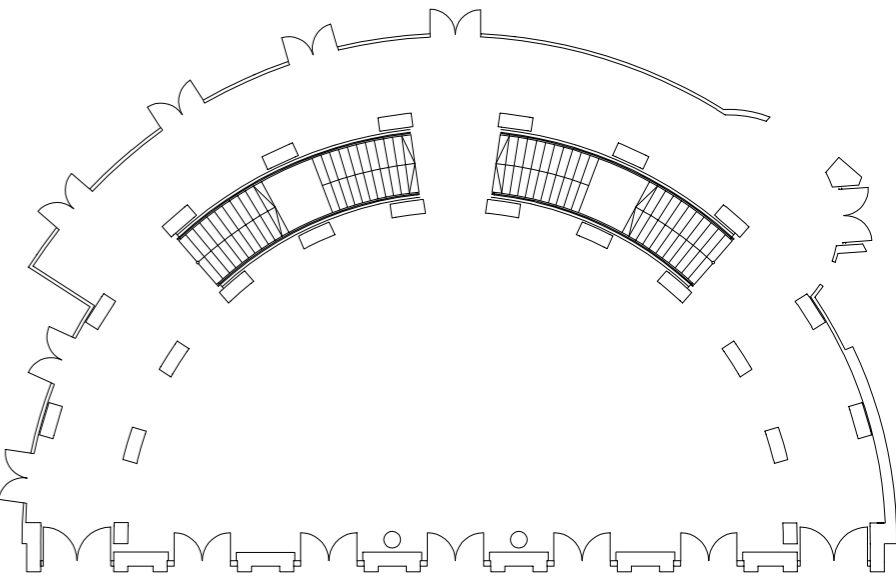




THE FOYER

A perfect location to begin any event, the redesigned Foyer is centered between the Grand Ballroom and Banqueting Rooms, with a grand marble staircase at its entrance. Exquisite arches comprised of marble and Jerusalem limestones surround the Foyer, creating a spacious and inviting pre-function setting.

Ideal for wedding ceremonies, cocktail receptions, seminar breaks and exhibits.



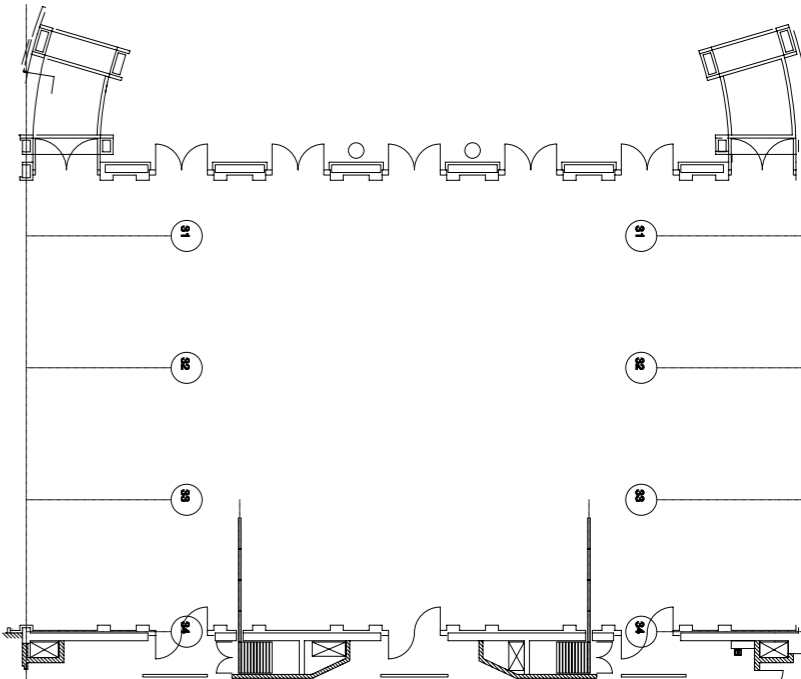
Dimensions (m)	23 x 11.5
Area (m2)	264.5
Ceiling Height (m)	7.1
Reception	350
Banquet	150
Theatre	280



GRAND BALLROOM

The prestigious and redesigned Grand Ballroom welcomes guests with its luxurious and warm ambience. The room's classic contemporary design is apparent in the richly textured carpets, pillars of rough-hewn golden Jerusalem limestone, and an ornately decorated Moroccan-style ceiling. Featuring a modular design, the Ballroom can be easily divided to accommodate small, more intimate celebrations. The prestigious Grand Ballroom in the David Citadel Hotel can be split into 3 separate sections for smaller events and meetings.

Ideal for weddings, conferences, seminars, exhibitions and large social gatherings.



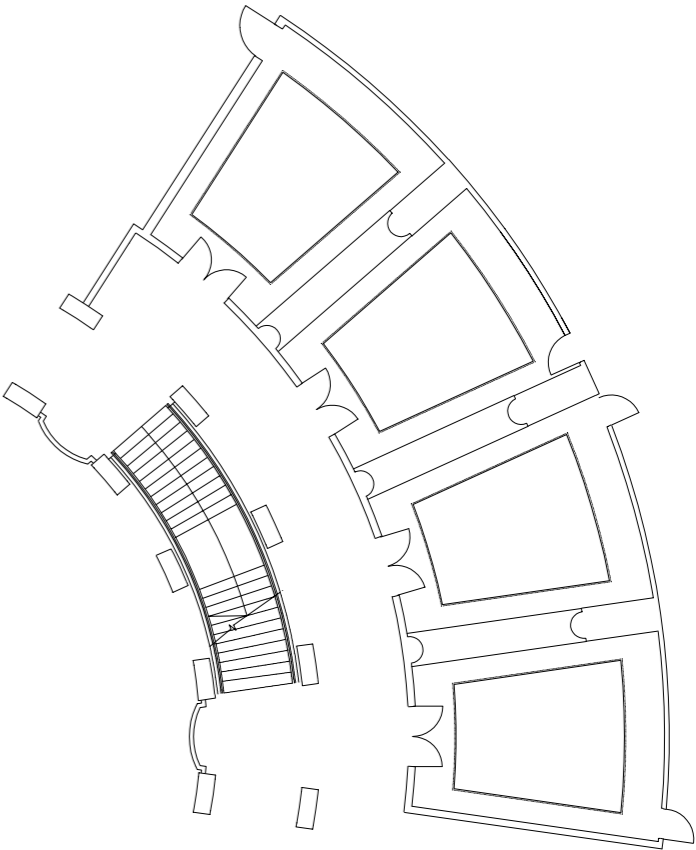
	Ballroom ABC	AB or BC	A or C	Ballroom B
Dimensions (m)	17.4 x 29.7	17.4 x 21.6	17.4 x 8.1	17.4 x 13.5
Area (m2)	516.5	375.5	140.5	234.5
Ceiling Height (m)	6.15	6.15	6.15	6.15
Reception	500	300	100	200
Banquet	400	240	90	140
Theatre	500	350	120	200
Classroom	280	150	45	80
U Shape	120	90	45	60



THE GATES BANQUET ROOMS

Named after four Old City gates (Lion, Jaffa, Zion, Flower), the David Citadel Hotel's four banquet rooms are designed so that each can function independently for small gatherings or be instantly expanded for larger occasions. Ideal for hosting meetings, the rooms come with state-of-the-art audio-visual equipment and adjustable lighting. The rooms' classic contemporary décor together with rich earth-tone colors, lush carpeting and wood paneling creates an elegant and luxurious ambience perfect for every occasion.

Ideal for meetings, conferences, seminars, brunches, lunches and dinner parties.



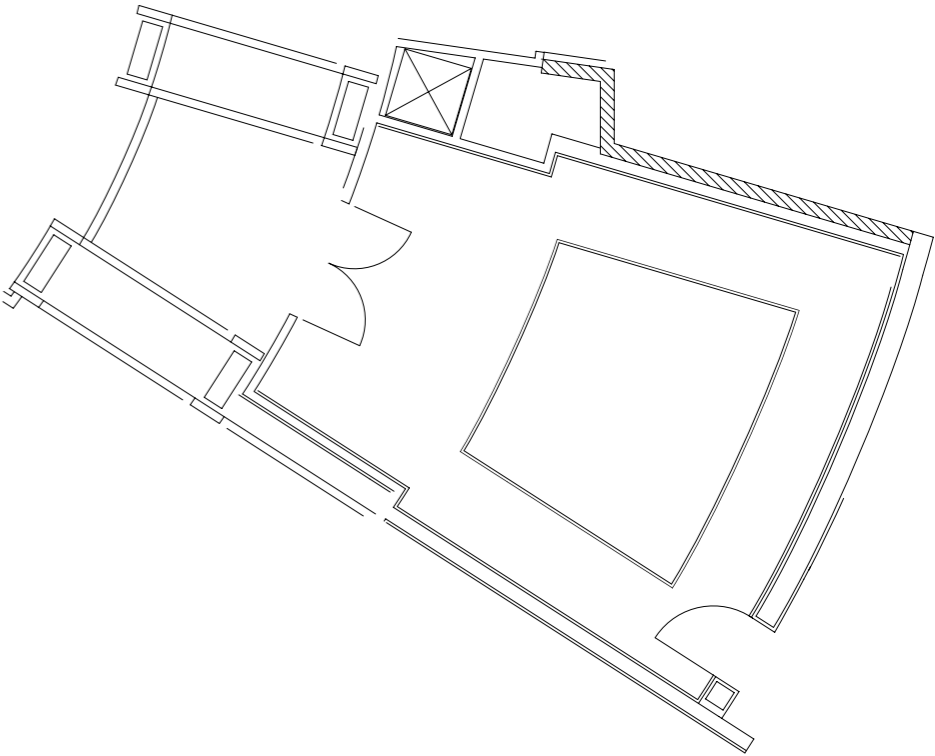
	All Gates	3 Gates	2 Gates	1 Gate
Dimensions (m)	7.2 x 24	7.2 x 17.8	7.2 x 12	7.2 x 6.2
Area (m2)	172.5	128	86.4	44.5
Ceiling Height (m)	3.4	3.4	3.4	3.4
Reception	150	80	50	20
Banquet	100	70	50	20
Theatre	160	100	80	30
Classroom	70	50	30	16
U Shape	60	40	32	16



CITADEL BOARDROOM

The renewed David Citadel boardroom is designed with sober, elegant decor using modern colors and tones, to create a creative and intimate yet professional atmosphere. Featuring oversized leather executive chairs, a boardroom table, adjustable lighting and audio-visual equipment, the Citadel boardroom is perfect for hosting meetings, confidential dinners and more.

Ideal for executive meetings and confidential dinners.



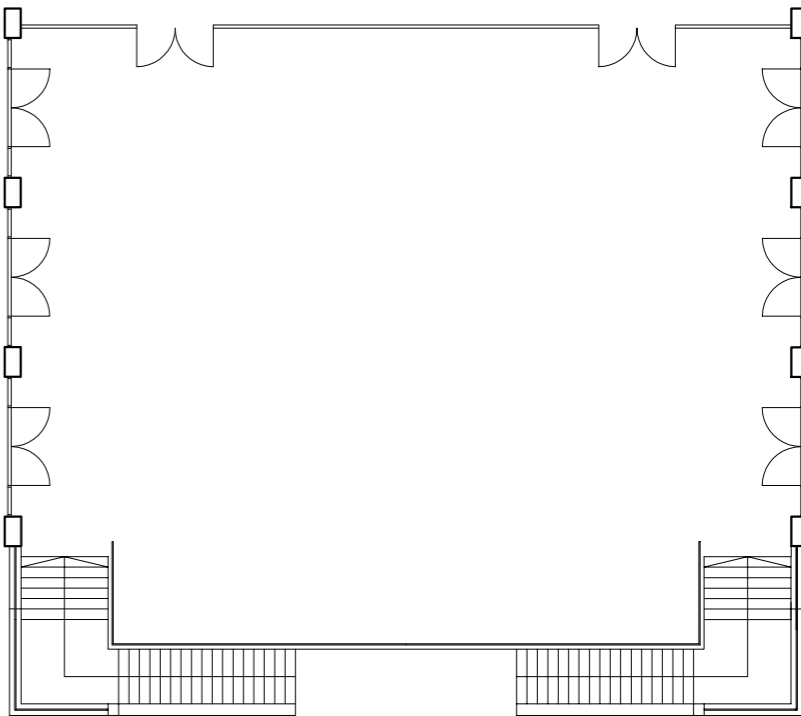
Dimensions (m)	7.8 x 5.8
Area (m2)	45
Ceiling Height (m)	3.4
Reception	N/A
Banquet	18



TERRACE

The most exclusive and exciting setting in all of Jerusalem, the Terrace offers spectacular views of the Old City walls, Tower of David and the luxurious hotel outdoor pool. Regardless of the occasion, the Terrace provides an enchanting experience that will be cherished forever.

Ideal for wedding ceremonies, cocktail receptions, lunches and dinner parties.



Dimensions (m)	23 x 18
Area (m2)	414
Reception	300
Banquet	200
Theatre	250

BANQUET AND CONFERENCE FACILITIES

ROOM'S NAME	DIMENSIONS (M)	AREA (M2)	CEILING HEIGHT (M)	RECEPTION CAPACITY	BANQUET CAPACITY	THEATER CAPACITY	CLASSROOM CAPACITY	U SHAPE CAPACITY
Foyer	23 x 11.5	264.5	7.10	350	150	280	-	-
Ballroom ABC	17.4 x 29.7	516.5	6.15	500	400	500	280	120
AB or BC	17.4 x 21.6	375.5	6.15	300	240	300	150	90
A or C	17.4 x 8.1	140.5	6.15	100	90	120	45	45
Ballroom B	17.4 x 13.5	234.5	6.15	200	140	200	80	60
Citadel	7.8 x 5.8	45	3.40	-	18	-	80	-
All Gates	7.2 x 24	172.5	3.40	150	100	160	70	60
3 Gates	7.2 x 17.8	128	3.40	80	70	100	50	40
2 Gates	7.2 x 12	86.4	3.40	50	50	80	30	32
1 Gate	7.2 x 6.2	44.5	3.40	20	20	30	16	16





AT THE HOTEL

BEFORE, AFTER AND IN-BETWEEN

Ensuring a seamless experience, in addition to hosting the actual occasion, the David Citadel Hotel provides guests with everything they may require before, during and after the event.

HOTEL ROOMS & SUITES

With 385 elegantly designed guestrooms and suites, the David Citadel Hotel offers exceptional accommodations with stunning views of Jerusalem's Old and New City and a full range of modern comforts and amenities.

THE DAVID CITADEL SPA

Designed according to Feng Shui principles, the David Citadel Spa integrates warmth, intimacy, smiles and touch with pleasant scents, soft lights and relaxing sounds of running water and music to turn each visit into a multi-sensual, highly pleasurable encounter. The Spa's cadre of therapists, all experts in their field, invite guests to enjoy a truly unique experience.





LOBBY LOUNGE

Breathtaking views of the Old City and a delectable menu featuring an array of dairy dishes and a rich variety of beverages highlight a visit to the Lobby Lounge. Whether guests choose to sit on the outdoor terrace overlooking the hotel's glowing pool and the Old City, or get comfortable on plush indoor couches, the Lobby Lounge is the perfect place for a relaxed, sumptuous dining experience.

SCALA RESTAURANT

The Scala restaurant welcomes you into its warm and comfortable atmosphere. A perfect setting for families and dinner affairs, it is the place to relax and lounge after a day's activities. Featuring a traditional Jerusalem-style menu of meat dishes and hot appetizers, it's where guests can treat themselves to authentic fresh traditional Jerusalem fare. The Scala restaurant is located near the upper level lounge on the fourth floor.





OUTDOOR SWIMMING POOL

Even on the coolest mornings, the outdoor pool is heated to an inviting 28C/83F. After dark it takes on a romantic atmosphere. Guests also enjoy relaxing on a sun lounger on the pool deck and may dine at the adjoining Grill Bar, which serves a wide choice of snacks, beverages and a special Shabbat menu.

EXECUTIVE LOUNGE

Located on the fourth floor, the award winning Executive Lounge offers a range of benefits in a relaxed atmosphere. A separate area provides the perfect space for hosting private business meetings, making it a top choice for dignitaries to meet in a more intimate atmosphere.

The exclusive lounge serves breakfast buffet and a selection of hors d'oeuvres.

Light dining and cold beverages are available throughout the day.

